

TARGA

FIRST TIMERS GUIDE



TARGA
TASMANIA



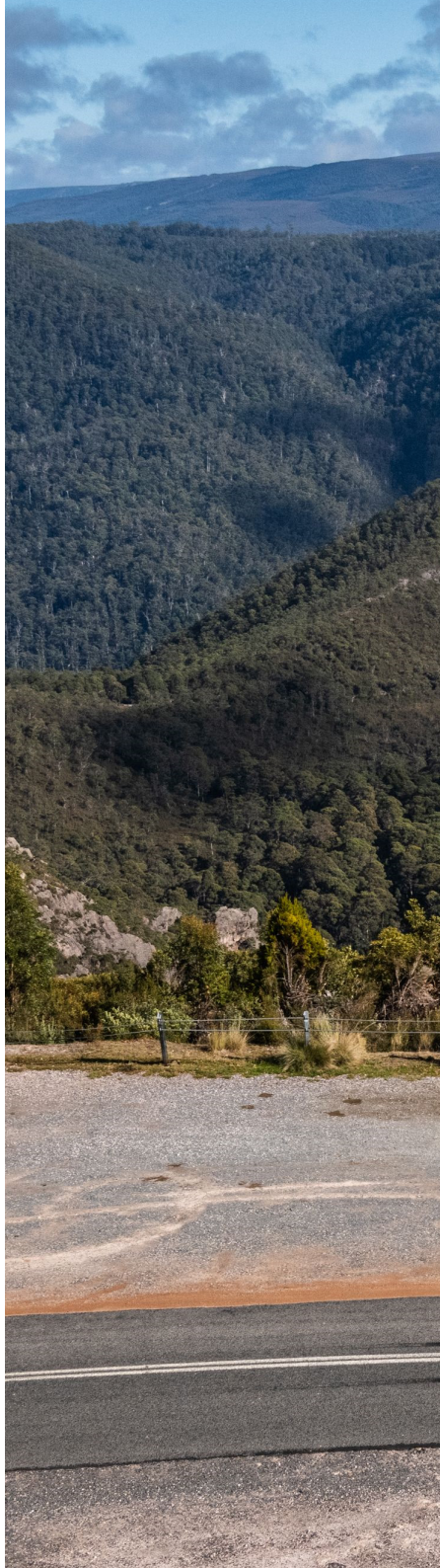
CONTENTS

This guide outlines the key requirements for competing in a TARGA event.

DISCLAIMER

The information in this guide does not supersede any of the regulations governing a TARGA event and therefore cannot be used as the basis for a protest.

It is the responsibility of the competitors/crews to ensure that at all times they conform to all eligibility requirements and their vehicle maintains legal roadworthiness.





LICENCE REQUIREMENTS

- Both driver and co-driver/navigator shall hold, as a minimum, a current Motorsport Australia Rally Licence.
 - Competitors who hold only a circuit racing licence must successfully complete a rally lecture and then obtain a rally endorsement for their licence from Motorsport Australia before the event.
 - For TSD Trophy, Thoroughbred Trophy and GT Sports Trophy, the minimum requirement is a Motorsport Australia Speed Licence for both the driver and co-driver/navigator.
- Prior to applying for a licence, you will need to become a member of a Motorsport Australia affiliated car club. Please call Motorsport Australia Member Services on 1300 883 959 if you require assistance.

MINIMUM AGE

To be eligible to compete in the 200km/h competition, both driver and co-driver/navigator must be a minimum of 18 years old.

Navigators in Thoroughbred Trophy and GT Sports Trophy must be a minimum of 16 years old.

Navigators in TSD Trophy must be a minimum of 15 years old.

INSURANCE

• Public Risk Insurance

TARGA is covered by public risk insurance as part of our Motorsport Australia Insurance Policy. Competitors/crews are liable for all property damage caused, however TARGA will make a claim on the competitor/crews behalf for all damage cause over and above the excess of \$15,000.

• Motorsport Australia Personal Accident Insurance

TARGA is covered by personal accident insurance as part of our Motorsport Australia Insurance Policy. Competitor/crews are responsible for paying all medical expenses resulting from an accident. In most circumstances, some of these expenses will be reimbursed via an insurance claim sent to the Motorsport Australia office. It is recommended competitors/crews are covered by an Ambulance fund.

• Vehicle Third Party Insurance

All vehicle must carry third party insurance, which is normally issued with registration papers. Proof of cover is required to be presented at documentation (registration papers or temporary permit). Owners of vehicles registered in Queensland are required to obtain a special extension of their third-party insurance for the period of the event from their third party insurer. Proof of this extension must be presented at documentation.

LOGBOOKS

All competition cars (with the exception of those competing in TSD Trophy) are required to have a Motorsport Australia logbook. Visit the Motorsport Australia website for more information: <https://motorsport.org.au/>.

APPAREL

Race suits and race boots are recommended for trophy competitions, but are not a requirement of competition. However, trophy competitors must wear neck-to-wrist-to-ankle clothing cover and closed shoes while competing. Clothing made of synthetic materials is not permitted.

For full competition categories, apparel must comply with the requirements of the Motorsport Australia Manual - General Requirements, Schedule D for National Tarmac Rallying.

In a closed car, you can use an open face helmet or a full-face helmet. Full face helmets are mandatory in open top cars. Helmets with built-in intercom units are preferable.

ROAD BOOKS

Road books provide details of the course and detailed instructions to travel between TARGA stages along the touring stages. Road books will be issued to competitors/crews at documentation prior to the start of the event.

RECONNAISSANCE NOTES

Reconnaissance is mandatory for all TARGA events.

This must be conducted in road-registered vehicles only and cannot be done in your competition vehicle. This must be conducted within the designated speed limits and respecting all other road traffic laws.

START ORDER

Vehicles will start in an order that will be determined by TARGA, based on the slowest, and generally the oldest vehicle, starting first.

TARGA STAGES AND TIME CONTROLS

TARGA Stage Starts:

Vehicles start a TARGA stage in the order that they arrive at the time control in.

On all TARGA stages, you will start on cold tyres and have limited grip until your tyres get up to temperature.

OVERTAKING

In the world of rallying, overtaking is rare, except at TARGA where cars start slowest to fastest at 30-second intervals.

Vehicles wanting to overtake need to signal the car in front by either sounding their vehicle horn, flashing their headlamps and/or using the 'push to pass' feature on the RallySafe device.

Any vehicle being overtaken, **MUST** give way. Should a driver indicate to overtake, the driver being overtaken **MUST** turn on their left side indicator and allow the overtaking vehicle to pass immediately by slowing and moving to the left side of the roadway and if necessary, stopping.

The overtaking vehicle must only pass on the right hand side of the vehicle being overtaken. Failure to permit overtaking will result in heavy penalties.

TOWING AND RECOVERY

A recovery team, including tow trucks, will follow the field and recover and secure any damaged or broken down vehicles and return them to the overnight stop for that day. A recovery shuttle will pick up the competitors/crew.

DOCUMENTATION AND SCRUTINY

Documentation and scrutiny will be carried out at the venue, date and time as listed in the event's Supplementary Regulations. Both driver and co-driver/navigator are required to attend documentation before their vehicle can attend scrutiny.

Vehicles must be presented and ready to start with all compulsory equipment on board, including all required apparel.

CREW BRIEFING

All crew members must attend a compulsory briefing. First timers must attend the relevant competition briefing as well as the compulsory first timers briefing. These briefings will be listed in the event's Supplementary Regulations.

SECURITY PARK

A security park is an area in which the vehicles will be parked overnight after documentation and scrutiny and after each leg.

All competition vehicles must be parked in the overnight security park.

LUNCH BREAKS

As a part of the entry fee, lunch will be provided to competitors on all days of the competition. Lunches are catered for in various towns and all competitors have the same lunch stop location.

Dietary requirements can be catered for with advance notice.

SERVICE CREWS

Up to six service crew members may be registered with TARGA, at no charge, by completing the appropriate registration form and lodging it at documentation. Registered service crew will receive access to service crew instructions and a wristband, which must be worn at all times.

Motorsport Australia Personal Accident Insurance is provided for registered service crew members ONLY. All service crew members must be at least 16 years of age.

COMPETITOR RELATIONS OFFICER

Competitor Relations Officers (CRO) have been appointed to support competitors/crews during the event. CRO's are the channel for all communications between the competitors and the Clerk of Course. Queries from competitors (whether on timing, being held up on a TARGA stage, alleged incorrect recording by officials affecting scores etc) are handled by the CRO's.

IN CAR CAMERAS

The competitors/crews agree that all photography, video and film copyrights for the event are the property of TARGA. Competitors are permitted to carry video cameras in their vehicles for the purpose of making moving or still picture records for their private viewing.

Any commercial arrangements made by the competitor/crews for the sale of film or video/ still footage, or viewing of such footage in a public place, must be approved in writing by TARGA. Competitors/crews are advised to contact TARGA prior to making commitments for any such commercial arrangement.

MEDIA

For the purposes of media reporting, social and/or traditional, TARGA reserve the right to report the results of any and/or all competitions as it feels necessary to ensure the highest level of media coverage.

TARGA appoints official videographers and photographers to produce the official TARGA television shows and videos, as well as stills of you and your cars. These are broadcast nationally and around the world. These companies are experienced at delivering the best footage and stills of your TARGA experience and offer pre-paid package deals to each team, which you can purchase pre-event. You will receive these at the conclusion of the event.

OFFICIALS

Competitors/crews and service crews are required to obey the instructions of the officials of the event. Any official appointed by TARGA will be a Judge of Fact. Our officials are all volunteers, and without their dedicated hard work, passion and love for TARGA, our events would not be possible. Please treat them with the utmost respect and remember to be kind.

POLICE

Any member of the local Police is a Judge of Fact in relation to traffic regulation infringements. Throughout the event, competitors/crews must observe the traffic laws of the state in which the event is being held. Any competitor/crew not complying with these traffic laws will be subject to penalties as outlined in the Sporting Regulations.

Fines and penalties applied by the Police will be in addition to those imposed by TARGA.

ACCOMMODATION & MEALS

Accommodation and meals (except lunch) are not included in your entry fee.

VEHICLE TRANSPORTATION

• TARGA Tasmania

Spirit of Tasmania - 1800 635 877

• All other TARGA events

For our TARGA Great Barrier Reef and TARGA High Country events, you may require vehicle transportation. Please make your own arrangements or contact CEVA Logistics for further information e: RAPT@cevalogistics.com p: (08) 8348 5888



VEHICLE REQUIREMENTS

A vehicle must be roadworthy at all times and equipped with the following:

- Two Safety Triangles
- First Aid Kit
- At least one tow point - either front and/or rear
- Oil absorbent material. Competitors/crews are required to carry in their vehicle a 1kg bag of environmentally friendly, 100% organic, non-leaching, biodegradable oil absorbent material (this may be kitty litter) or 500g of specialist absorbent material
- Blue triangle to show location of the vehicle's battery
- Motorsport Australia approved Type 3 Safety Cage structure for Classic, Classic GT, Early Modern 2 & 4, GTP and GTO and a Type 2 Half Safety Cage structure for Throughbred and GT Sports Trophy
- FIA approved seats
- Six point FIA approved race harnesses and HANS devices are mandatory except in TSD Trophy
- Tyres must be road legal (no slicks allowed) and maintain a tread depth above the wear indicators at all times. Any vehicle found to have unsuitable tyres at any time will not be allowed to proceed through the next stage until the tyre/s are changed to the satisfaction of the organisers
- It is mandatory to securely fit a correctly maintained hand-held fire extinguisher with a total capacity of 2.0kg. They must be bolted to the floor in front of the seat unless you can locate them in a more convenient position. Mounting brackets must be metal

RALLYSAFE

In order to monitor the speed and track vehicle positioning during the event, the fitment of RallySafe equipment to each vehicle is mandatory. All RallySafe units are hired for the duration of the event only. The hire fee is a part of the entry fee into each TARGA event.

In order to fit the unit, a pre-purchased installation kit is required. RallySafe installation kits (including antenna, roll cage or diamond mount and power wiring loom) MUST be purchased prior to your first event, with adequate lead time (2 weeks) for postage and handling. RallySafe installation kits are to be purchased directly from the RallySafe online store <https://shop.statusas.com/shop/category/rallysafe/>

Installation instructions and specifications are available on the RallySafe website, including a training video showing all aspects of the system. The competitors/crew agree all data obtained by the RallySafe device for the event is the property of TARGA and competitors can only obtain and use this data with the written permission of TARGA. Failure to observe these regulations may lead to legal action by TARGA for a breach of copyright.

AIR FILTERS

You will need quality air cleaners due to the presence of dust and gravel in most rural areas.

BATTERY

Make sure your battery is securely mounted. You can relocate your battery to a lower point in the vehicle, however it will need to be inside a battery box. Gel filled batteries can be used instead of lead acid and mounted to any position.

COOLING SYSTEM

TARGA is conducted in variable weather and often includes steep ascents, therefore, your cooling system must be in top condition. Replace suspect belts and hoses, especially those in your heater as they can burst and dump boiling water on your feet.

Installing a swirl pot is a useful consideration if your cooling system is marginal. This device allows the gas bubbles to separate from the coolant if using a water-based material.

A temperature sensor can also be fitted to the engine block with an audible warning in the cockpit.

FUEL

We mandate the use of 98 octane fuel as the maximum octane.

Consider tuning for 95 octane and using 98 as you may not always have access to 98 in country towns. Carry enough octane booster for a full tank in case of pinging or detonation.

Under race conditions, most cars will not pick up the last few litres of fuel. To overcome this, you may fit a small interim surge tank of a few litres to supply the fuel pump with a constant head of fuel. Most gauges will have about 10 to 15 litres of fuel before you run out. With a surge tank you can draw every last drop of fuel.

A mechanical fuel pump works well, but if you split a diaphragm it can mix fuel with oil, resulting in uneven idling, variable oil pressure and even ruin your engine bearings as the oil is thinned out by the contamination of fuel.

Electrical fuel pumps come in two varieties, pushers and pullers. If you get them mixed up you can get poor hot starting, fuel starvation and detonation that can result in a holed piston/blown head gasket.

You are not permitted to carry fuel in containers in your car.

REFUELLING AND ROADSIDE WORK

Refuelling and roadside work is restricted on suburban streets and all built-up areas. Any refuelling action or any other action undertaken roadside on the course, must not impede, disrupt or otherwise affect normal traffic movements in any way and must be conducted off the normal road surface.

Refuelling must be carried out in a safe manner at all times.

KILL SWITCH

If fitting a kill switch, you will need a double pole isolator that both isolates the battery and cuts off the power to your ignition system or engine management system.

It is highly recommended to fit the kill switch within easy reach. A secondary pull tag to operate the kill switch must be mounted externally at the base of the windscreen on the driver's side, so the battery can be isolated from outside the car in the rare case you become trapped inside with the engine running.

SUSPENSION

It is recommended to maintain a standard ride height with at least a 50% increase in your spring rate, subject to the weight of your car. If you hit a dip with soft or lowered suspension, you may run the risk of rupturing your sump or tearing off your exhaust system.

TYRES AND WHEELS

You have the option to use ten tyres at each event, but four of these must be wet tyres, as defined by Motosport Australia.

Soft compound tyres will generally not last the length of an event, particularly TARGA Tasmania. A medium compound may get you through the event, but will be determined by the weight and power of your car.

By the end of TARGA, you will likely have worn out a full set of R Series tyres, so make sure you don't start the event on a set of used tyres.

Many tyres are required to be mounted for the correct rotation. This is also marked on the sidewall.

BRAKES AND BRAKE FLUID

Under TARGA Regulations, you may upgrade your brakes, however we suggest reading the Technical Regulations for more information.

High boiling point DOT 4 is recommended for brake fluid. Do not use standard brake fluid.

NUTS

Ensure important nuts are secured by spring washers or use Nyloc nuts. Never leave wheel nuts untightened.

LIGHTS

Ensure all lights are in good working order as you will be required to run low beam on all TARGA stages.

For those with retractable headlamps, you may use fog lights instead.

VENTILATION

TARGA events take place in all sorts of weather conditions, ranging from zero to forty degrees, all within the same event (it has even been known to snow).

Misting up inside the car can be very dangerous so ensure you have good ventilation. Use Rain-X to minimise the misting effect. Just make sure you minimise the use of the air conditioning compressor where possible because with so many rev changes on a stage, the unit may not cope.

CATCH TANK

Your engine will create a lot of oily fumes mixed with condensation and fuel and you do not want this fed back into your air intake. A two litre reservoir with a drain tap is a great idea. You can inspect its contents by draining it in to a glass jar and allowing the contents to settle out. Oil will float to the top, water will show as clear underneath.

Make sure that the vents are not blocked. If you pressurise your crankcase you will blow out your oil seals or start blowing a lot of smoke when oil goes where it is not meant to.

OIL SURGE

Many engines have been ruined by oil surge. This occurs when the oil in the sump is forced away from the oil pickup and the pump fails to deliver an adequate supply of oil to the bearings. This can happen while cornering, braking or accelerating and is exacerbated by using high grip R Series tyres generating high G forces.

The easiest but probably least effective thing to do is to overfill the sump by a litre. It is far better to have a properly baffled sump that traps the oil and keeps an adequate amount near the pickup at all times. If you have any doubts about this, please fit a LARGE low oil pressure light.

WEIGHT

Vehicles must be in line with the minimum weight specification as outlined in the Technical Regulations. Vehicles may be subject to weighing at any time during the event.

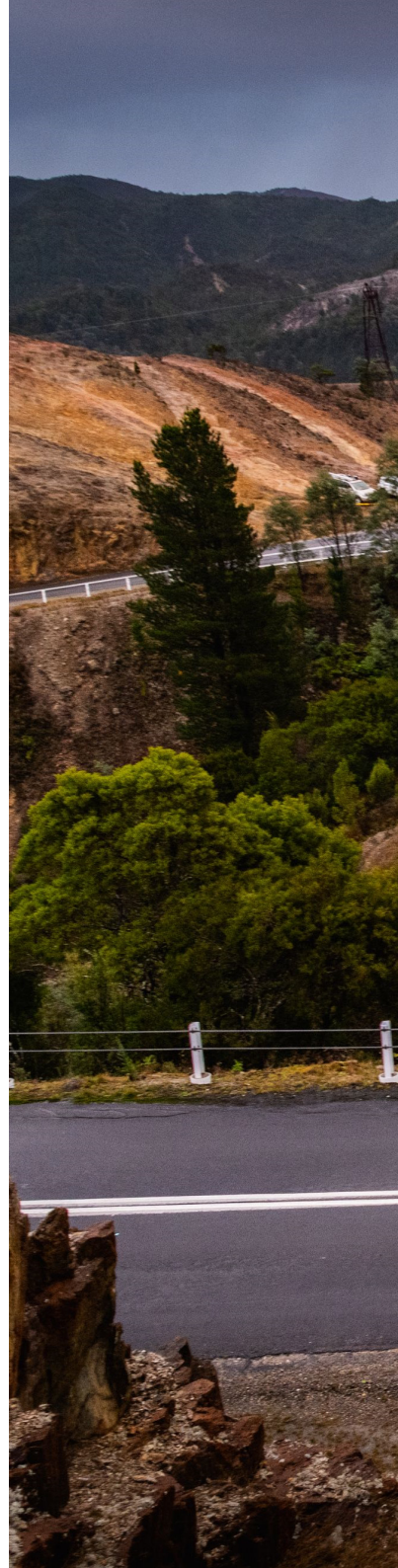
SPARE PARTS AND TOOLS

A roll of wire and race tape will be your best investment. Light wire comes in useful for securing all sorts of loose bits, even doubling as a split pin or brake pad locking device, if necessary.

Race tape in body colour will hide a multitude of sins and cover up those little indiscretions you may have with the scenery.

A tool roll is best rather than a toolbox as you can locate it in a more secure fashion or wedge it into a small crevice. Whatever you do, make sure that it will not come loose in the boot and destroy fuel lines, or wiring or anything else that is fragile.

Any heavy items must be securely bolted down.





PROHIBITED

ALCOHOL, DRUGS AND OTHER SUBSTANCES

Any holder of a Motorsport Australia Licence may be tested for the presence of drugs (or other banned substances) and subject to a penalty(ies) for a breach in accordance with the Motorsport Australia Anti-Doping Policy and/or the Motorsport Australia Illicit Drugs in Sport (Safety Testing) Policy as published on the Motorsport Australia website.

Consumption of alcohol in any section of the competition venue/course under the control of the officials is forbidden until the event concludes each day. At any time, any holder of a Motorsport Australia Licence may also be tested for the presence of alcohol by a Motorsport Australia Accredited Testing Official (MAATO) or a Motorsport Australia Certified & Accredited Testing Official (CATO) in accordance with the Motorsport Australia Alcohol Testing Policy.

CONSUMPTION OF AND CARRYING ALCOHOL

During any event, consumption of alcoholic beverages in any section of the competition venue under the control of the officials is expressly forbidden until all practice or competition activity is concluded for each day.

Any competitor/crew member who is found to be affected by alcohol on the day of the event or practice shall not be permitted to compete. The carrying of intoxicating liquor while on the course is strictly forbidden and offenders will be liable to a penalty including disqualification from the event.

ALCOHOL BREATH TESTING

Breath testing of both competitors/crew members will take place throughout the event. Any competitor/crew member with a positive reading above 0.01mg/100ml may be retested after fifteen minutes. During this time, the competitor must not consume any substance by mouth until after the second test. If, after the second test, the competitor is still found to have a reading above 0.01, the crew will not be allowed to take part in the leg of the event in which the competitor returned a positive reading and a further penalty as high as disqualification may be imposed by the Stewards.

Testing will be carried out by local Police or Motorsport Australia Accredited Testing Officer (MAATO) appointed by the organisers.



CONTACT DETAILS

For further enquiries and to enter a TARGA event, please email us at:
enquiries@targa.com.au

FOLLOW US

Youtube: TARGA

Facebook: @TARGA

Instagram: @__TARGA__

Twitter: @TARGANews

LinkedIn: @TARGA Australia

Make sure you tag us in your photos, so we can see all the special moments from your TARGA adventures!

TARGA.COM.AU

